



Redmayne Arnold & Harris
estate agents, letting agents & surveyors

rah.co.uk

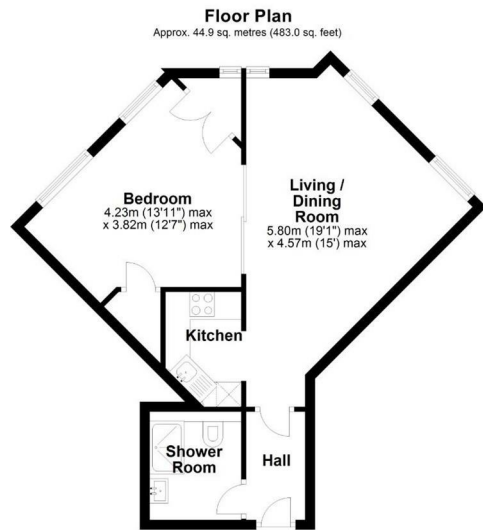


TO LET



29 Waterhouse, Water Lane, Cambridge, CB4 1XZ

£1,250 PCM



Total area: approx. 44.9 sq. metres (483.0 sq. feet)

Drawings are for guidance only
Plan produced using PlanUp.

THE PROPERTY

A spacious and well-presented one-bedroom ground floor flat, offering comfortable and convenient living in a sought-after location.

The accommodation comprises an entrance hall leading into a bright open plan living and kitchen area, providing a versatile space for both relaxing and entertaining. There is a good-sized double bedroom and a bathroom, with the property offered unfurnished to allow tenants to make the space their own.

Additional benefits include secure bicycle storage and off-road parking.

The property is ideally positioned for excellent access to the Cambridge Science Park and the A14, making it particularly well suited for professionals and commuters. The surrounding Chesterton area benefits from a range of local amenities including supermarkets, convenience stores, cafés, and takeaways, all within easy reach, while the nearby Cambridge City Centre is just a short journey away by bus or bicycle, offering a wider selection of shops, restaurants, and leisure facilities.

The property is managed by RAH.

Council Tax Band: B

EPC Rating: D

Deposit: £1,550

Holding Deposit: £310

Minimum 12 Month Tenancy

SITUATION

Directions

